



# NEW PRODUCT OFFERINGS

Shooter First LLC is the natural outgrowth of years of tactical operation experience, practical training expertise, and product development success.

Patent pending designs.



**WE EXIST  
TO MAKE YOU  
BETTER!!!**



**Made in the USA**

2026 DESIGNS

**SHOOTER FIRST LLC**

WWW.SHOOTERFIRST.COM



# SHOOTER FIRST

POWERED BY MASABA INC.

## PRODUCT INNOVATION

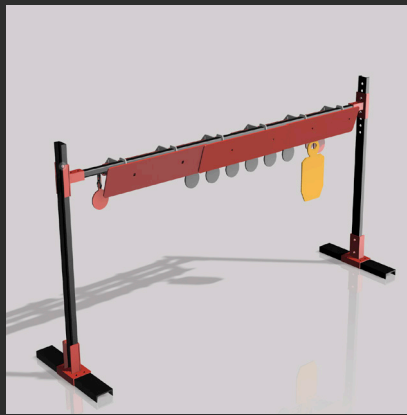
We specialize in custom-built steel targets and range equipment engineered for shooters who demand uncompromising performance. Using ballistic-grade AR steel, advanced fabrication, and modular designs, we can create everything from one-off targets to complete training systems. Let's make this happen! We can design, build, and deliver it—strong, safe, and range-ready.



### PRO-SERIES

NO BOLTS, NO WELDS, NO TOOLS  
PATENT PENDING DESIGN

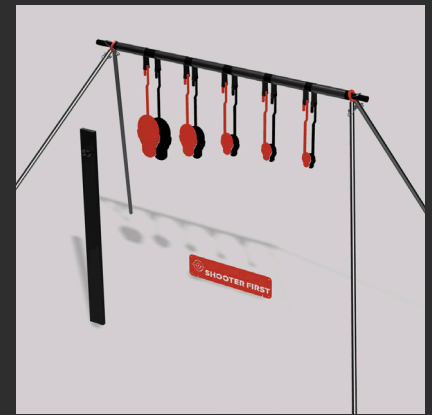
If you have any familiarity with the use of Steel Targets, you will know that targets will inevitably fail at bolted/welded connection points; often rendering the target useless.



### SHOOTING GANTRY

MULTI-PURPOSE, SHOOT-TO-RESET  
SYSTEM | PATENT PENDING DESIGN

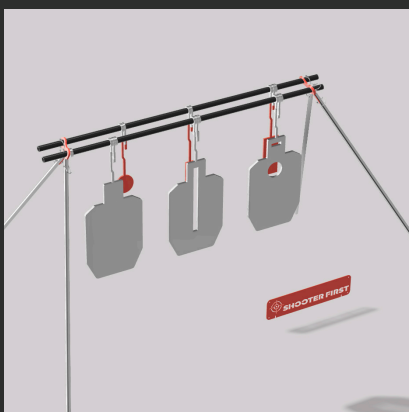
Quick-Swap targets (size, shape, placement). No ropes or chains and bars to reset targets. This opens up rifle engagements from distance.



### LE SNIPER HANGERS

KNOW YOUR LIMITS FROM 100-300  
YARDS HOSTAGE SIMULATOR

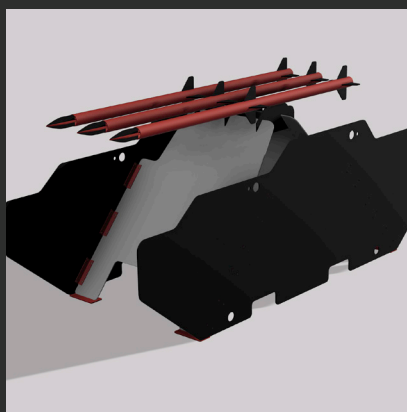
Target system specifically developed for the Law Enforcement Sniper Community to test and challenge assumptions, capabilities and skills.



### DOUBLE HANGER

HANG WHAT YOU WANT - SCENARIO  
CHALLENGES

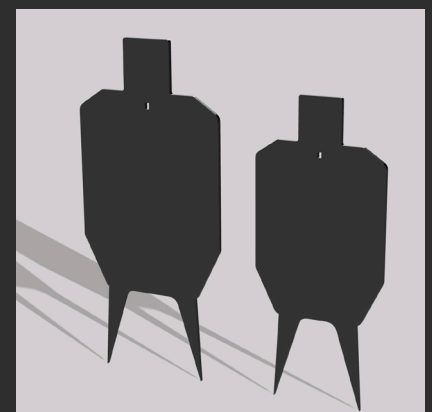
Easy to setup training hanging system. Setup shoot-thrus, partially obscured target, or reductions. Targets can be custom ordered per request.



### CUSTOM TARGETS

DESCRIBE WHAT YOU NEED AND  
WE CAN ENGINEER THE SOLUTION

Big or small we can manufacture targets that range from simple and small, to full scale vehicles, aircraft and marine vessels.



### WHITE LABEL

TARGETS AND RANGE EQUIPMENT  
ENGINEERED RANGE FACILITIES

If you have target manufacturing needs under your own label, or would like to move in that direction, inquiries are welcome. We have almost 400,000 sq' of fabrication facilities.